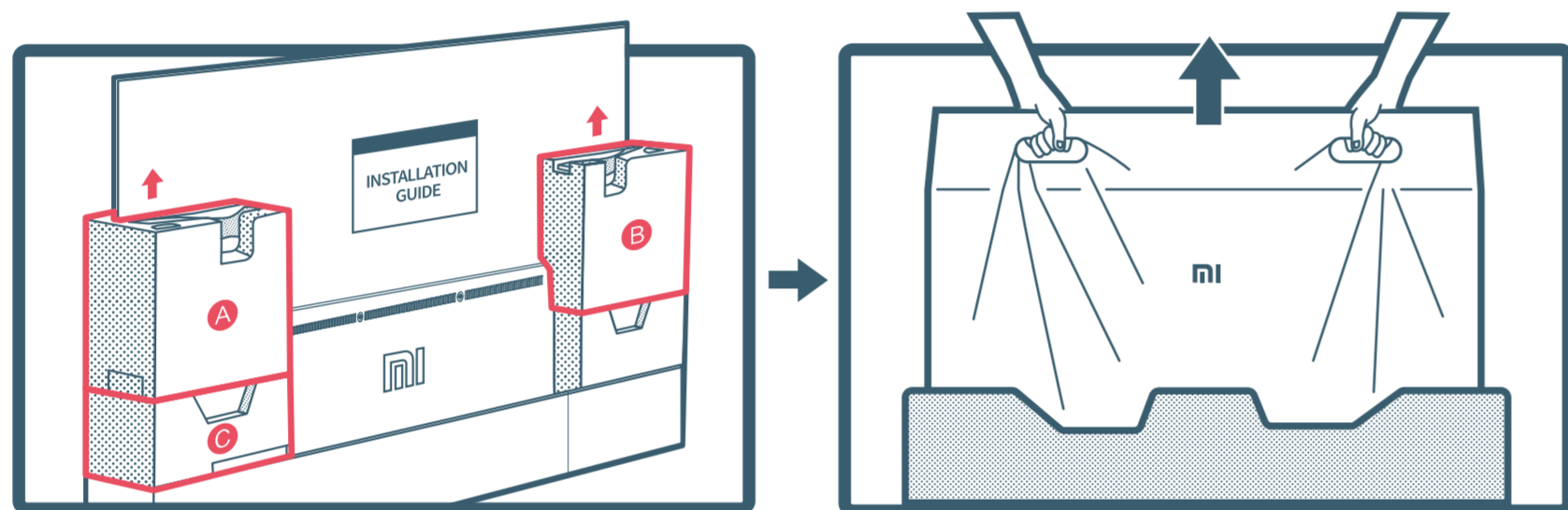


# mi LED TV Safety Notice and Installation Guide

mi.com



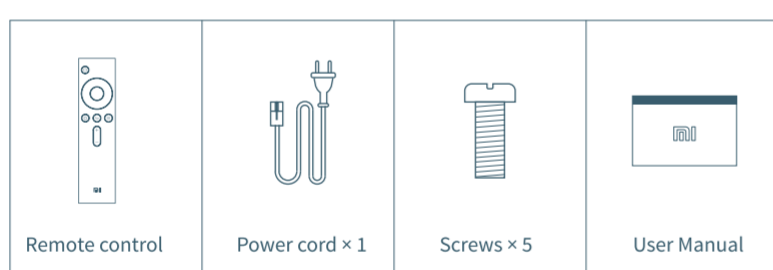
## Remove the accessories

Remove the A and B styrofoam protectors. Take out the power cord, remote control, and screws from the protector C.

## Take out the TV set

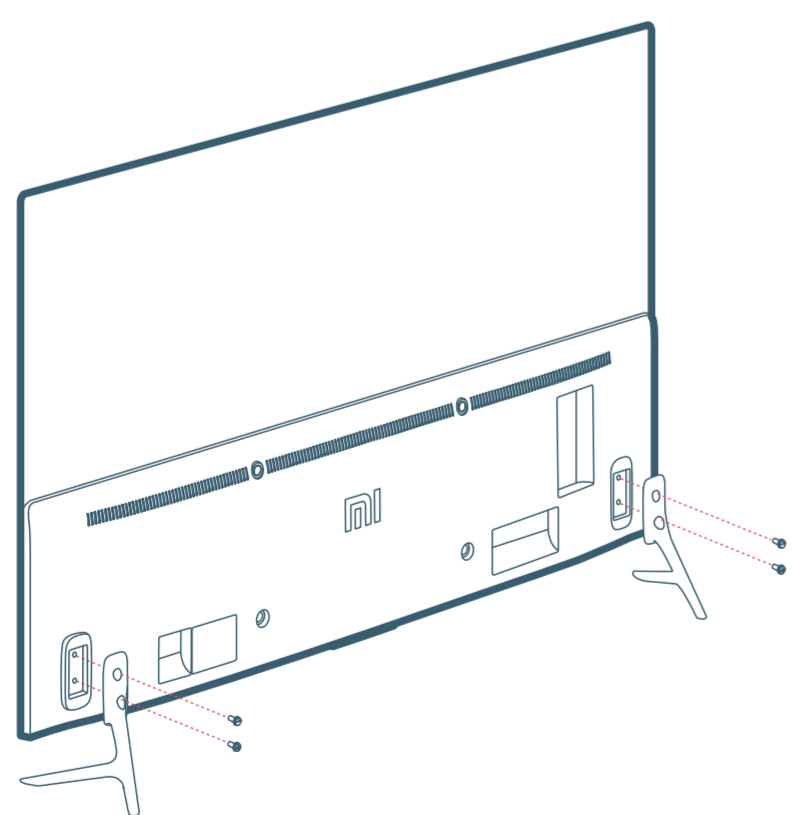
Remove the TV set from the protector and place it on a level surface with screen facing down.  
\*This should be performed by 2 people. Be careful not to damage the screen.

## Accessories



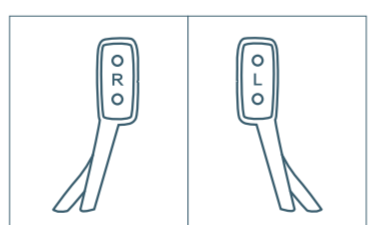
Note:  
1) Accessory Items may vary depending upon model.  
2) Specifications may change without prior notice. Recommended visiting website (www.mi.com) for latest updates.

## Installing legs



### 01 Install legs

Both left and right legs are clearly marked. Install them as shown in the picture.



### 02 Turning on your TV

Connect one end of provided power cord to TV and another to AC power outlet carefully.  
Push the power button located at bottom of TV (or press power button on remote) to turn it on.  
Follow screen instructions of quick start guide to setup TV.

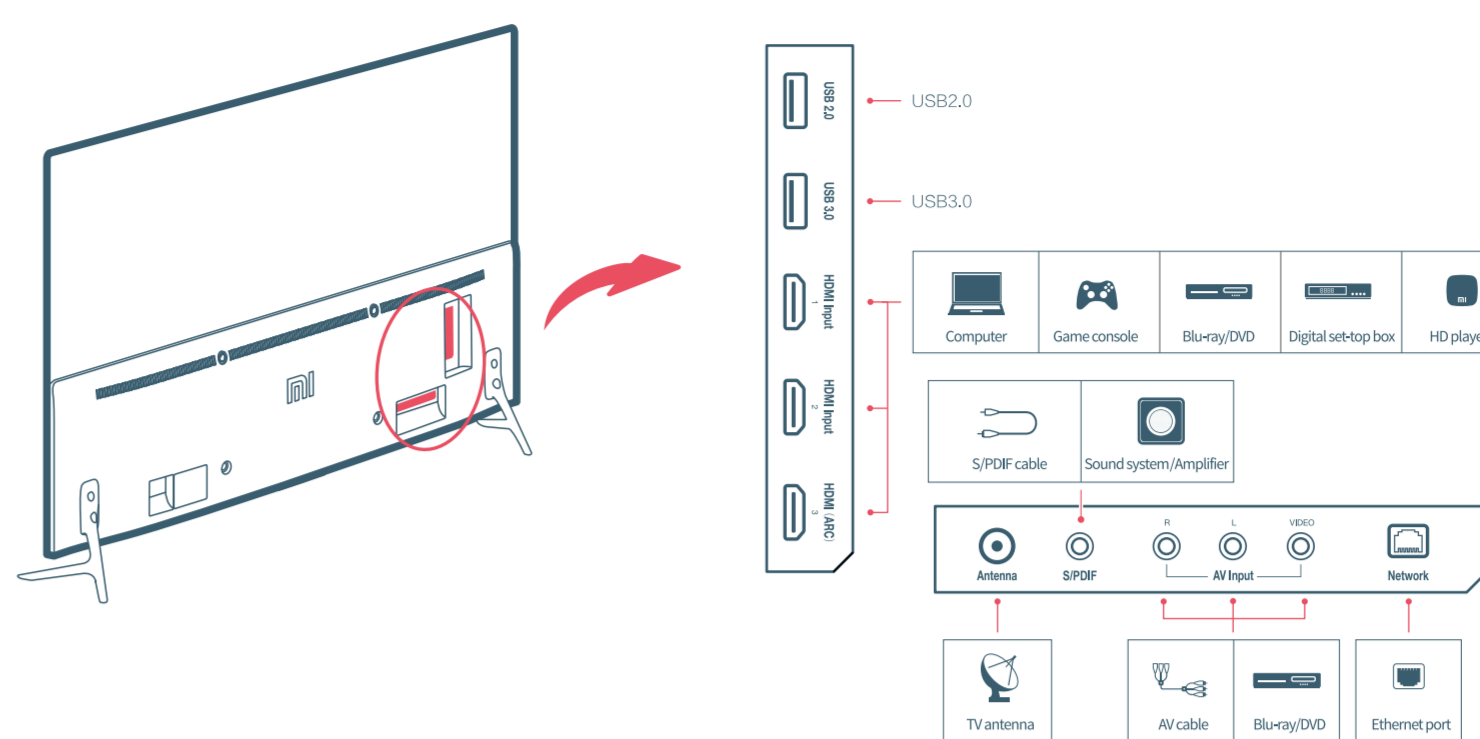
\*Remove the protective film from the TV frame and the back side of the TV set before turning on.

### ATTENTION

This product is qualified for the BEE Star rating in the "home" Mode. The Objectives of Star Labeling Program is designed to promote energy efficient products and practices. When the television is initially set up, it is designed to meet the BEE Star Labeling requirements while maintaining optimum picture quality.

- Changes to certain functionalities of this television (TV Guide, Picture/sound etc) may change the power consumption.
- Depending upon such changed setting (eg., Retail mode), the power consumption may vary which possibly could exceed the stated energy consumption.
- To reset the television to Star rating qualified settings, select "Home" mode from the initial set-up procedure in "factory settings" under the "Set-up" menu.

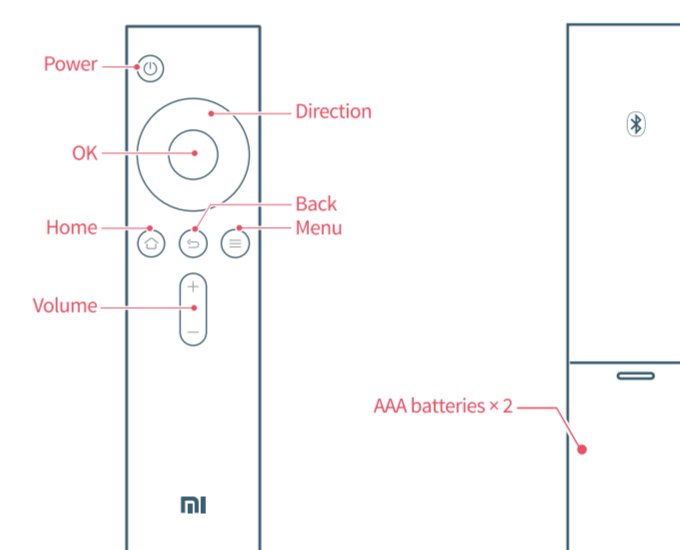
## TV interface



## Specs

<b>Basic specs</b>	Screen size: 138.8cm Screen resolution: 3840x2160 (4K)	<b>Wireless connectivity</b>	Wi-Fi: 2.4/5GHz, 802.11a/b/g/n (Beamforming support) Bluetooth: 4.0, BLE
<b>Hardware specs</b>	CPU: 1.8GHz quad-core Cortex A53 Internal memory: 2GB DDR3 Flash memory: 8GB flash Graphics processor: Dual-core Mali-T830	<b>Audio and video encoding</b>	Audio formats: FLAC / WMA / MP3 / AMR / DTS-HD / DOLBY / AAC / OGG Video formats: MPEG 2/4 / H.263 / H.264 / H.265 / VP8 / VC1 / WMV3
<b>Ports</b>	Input interface: HDMI x 3; AV x 1; Antennax1 Multimedia Broadcast (DTMB) x 1 Output interface: Digital audio output (S/PDIF) x 1 Audio output HDMI (ARC) x 1 Data interface: USB2.0 x 1; USB 3.0 x 1; Ethernet port x 1	<b>Audio effects</b>	Dolby Audio
		<b>Other specs</b>	Model: L55M5-AI Voltage: 100-240V~ 50/60Hz Power consumption: 155W

## Using the remote control



**Power:** Press to select, Reboot, Power Off 20 sec., Delayed Power Off, Screen off options.

**OK:** Press to confirm current selection during navigation. You can pause/play the current video during playback, except Live Channels/Set-Top Box or RF.

**Home:** Short press to quickly return to the Home screen.

**Direction:** Navigate up/down or left/right through content. During playback use left/right buttons to rewind/fast-forward.

**Back:** Go back to the previous level.

**Menu:** Press to display additional option menu/functions under current watching input. Displays online video search option when at home page. Displays additional video/audio settings while playback. Displays more classification options while external media browsing.

## Important precautions

### Installation

- The TV should be installed near an AC power outlet that can easily plug and unplug.
- The AC power cord is not suitable.
- Place the TV on a smooth, flat surface to avoid the TV falling and causing injury or damage to the TV.
- If you intend to install the TV wall mount, we recommend that you use an authorized TV wall mount. For details, please contact the nearest service hotline.
- The diameter and length of the screws will vary depending on the wall mount model. Failure to use the correct screws may cause the TV to tilt or to be damaged.

### Moving

- Disconnect it cables before moving the TV.
- Large TV must 2 or more people to move safely. Avoid applying pressure to the LED panel when moving the TV. Avoid shaking the TV or exposing it to excessive vibrations.
- Keep a space for ventilation around the TV.
- When moving the TV to a new location or to carry out repairs, package the TV using the original box and packaging materials.

### Ventilation

- Do not cover the ventilation holes or insert any objects into the case.
- Do not place the TV in a closed cabinet, box, or closet.
- Do not cover the TV with fabric (such as curtains) or other materials (such as newspapers).

### Wall mounting

- In order to ensure proper ventilation and prevent the buildup of dust or dirt:
- Do not mount the TV flat, upside-down, or backward, or side mount the TV.
- Do not place the TV on a shelf, cabinet, box, or closet.
- Do not cover the TV with fabric (such as curtains) or other materials (such as newspapers).

### AC power cord

- Use the AC power cord and socket according to the instructions below to avoid fire, electric shock, damage, or personal injury:
- Insert the plug completely into the AC socket.
- Use the TV with a 300-300V AC power source.
- When connecting cables, the AC power cord should be unplugged for safety reasons. Be careful not to trip over cables.
- Before carrying out work on moving the TV, disconnect the AC power cord from the AC power outlet.
- Keep the AC power cord away from heat.
- Hold the AC power plug and clean it regularly. If the plug is covered with dust and has water vapor, its insulation quality may deteriorate, producing a fire risk.
- Avoid excessive pinching, bending, twisting, or twisting of the AC power cord, otherwise the wires may become exposed or broken.
- Do not place any heavy objects on the AC power cord.
- Do not pull the AC power cord when disconnecting the power.
- Do not connect too many devices on the same AC power outlet.
- Do not use unreliable AC power outlets.
- Please regularly inspect devices such as switches, power plugs, sockets, appliance couplers, etc., must not be surrounded by clutter to facilitate access.

### Children

- Do not let children climb the TV.
- Place small objects out of the reach of children in order to avoid swallowing.

### Optional items

Please do not connect any devices that emit electromagnetic radiation away from the TV in order to avoid image distortion or noise.

### about the screen curve

A slight curve may appear due to the materials and usage conditions. Note that this TV sets are not made of curved glass. The curve is not in the temperature range of 20°C-40°C. To eliminate the possibility of injury risks in normal usage conditions, our products will undergo strict safety and quality assessment procedures before they reach our customers.

### Advertising

This TV has no advertising when it is switched on and off. The advertising that is displayed when the TV is switched on and off cannot be removed or altered, and we bear no responsibility for the content of third party advertising.

### In case of the following problems ...

- The AC power cord is damaged.
- The AC power outlet is not suitable.
- The TV is damaged due to a sharp impact.
- A liquid or solid object falls into the case through an outlet.
- Turn off the TV and immediately plug the AC power cord. Ask the nearest service center to dispatch qualified service personnel to investigate.

### Usage restrictions

- Flammable:** Do not use the TV in the following places, environments, or conditions, otherwise the TV may malfunction and cause a fire, electric shock, damage, or personal injury.
- Flammable:** Outdoors (in direct sunlight), by the sea, in a ship or other vessel, inside a car, in a medical institution, or in a childcare facility, needs to locate on a place exposed to fire, moisture, or rain. If the TV is placed in the downpour of a public bath or spa, it may be damaged by the water.
- Environment:** Hot, damp, or dusty places, places where there are other places that may be exposed to mechanical shock, such as in a machine (such as a car), or in a place where the TV is exposed to strong vibration, and the TV may cause abnormal operation. Do not place the TV in a damp or dusty place, or in a room with steam or fumes (such as a bathroom) to avoid electric shock, or deformation. Do not boil water, heat, cook, or use mosquito coils near the TV.
- Caution:** Do not use the TV when your hands are wet, when the case is open, or with accessories that are not authorized by the manufacturer. Be careful of lightning storms. Disconnect the TV from the AC power cord and AC outlet. Do not install the TV in an open-air location. Failure to follow these conditions may result in personal injury or damage, or cause objects to be hit by the TV.
- Damage to TV screen:** Do not place any objects toward the TV. Otherwise the screen may be broken due to the impact and cause serious injury. Be careful of damage to the surface of the TV. Do not touch the TV when the AC power cord has been unplugged, otherwise electric shock may occur.
- Operating conditions:** Operating temperature: 5°C-40°C Humidity: 20%-80% Storage temperature: 15°C-40°C Relative humidity: <math>10\% - 90\%</math>

### Precautions

- Watch TV in appropriate lighting conditions. Watching TV in insufficient light or for long periods may damage your eyesight.
- The screen and case will get hot when the TV is working. This is normal.

### Using and cleaning the screen/case of the TV

- Before cleaning the LED TV, ensure that the AC power cord is disconnected from the AC power outlet in order to avoid deterioration of the using materials or corroding the screen coating.
- Use a soft cloth to remove any dust on the surface of the screen/case. If there is still dust, wipe with a soft cloth that has been moistened with a mild detergent.
- Do not spray water or detergent directly onto the TV. It may drip to the bases of the screen or external parts, causing malfunctions.
- Do not use harsh, abrasive, or caustic cleaners, scouring powder, or volatile liquids, such as alcohol, acetone, benzene, or ammonia. The use of the above materials or detergent causes not only or vinyl products may cause damage to the screen surface and casing materials. It is recommended that you regularly clean the TV to ensure proper ventilation.
- When adjusting the angle of the TV, slowly move the TV to prevent knocking or slipping from the base.

### Important notice

This is a sensitive film on the screen. Do not try to remove anything from the screen.

### E-Waste

Household products are in conformity with the requirements of the reduction of hazardous substances of the Waste Restriction Directive (RoHS). The content of hazardous substance within the scope of the application based on RoHS Directive is as follows:  
Lead (Pb) - not over 0.1% by weight;  
Cadmium (Cd) - not over 0.01% by weight;  
Mercury (Hg) - not over 0.1% by weight;  
Hexavalent Chromium (Cr<sup>6+</sup>) - not over 0.1% by weight;  
Polybrominated biphenyls (PBBs) - not over 0.1% by weight;  
Polybrominated diphenyl ether (PBDEs) - not over 0.1% by weight.

For the purpose of recycling to facilitate effective utilization of resources, please return this product to a nearby authorized Collection Centre, registered dismantler or Recycler, or Home Service Centre when disposing of this product.  
What the White Box symbol means: The symbol says don't dispose your waste into the municipal waste collection bins. That because these wastes are hazardous in nature and need to be recycled in a special way.

### How to dispose this product

Carry it to nearest service center of Home OR Call the toll free number: 1000 222 8288 OR write us on service@mi.com.cn. In accordance of handling the product during and after its use and DoD and DoT's with respect to handling the product.

### Do's:

- Always look for information on the catalogue with your product for end-of-life requirement handling.
- Ensure that only Authorized Recyclers repair and handle your electronic products. Authorized Call Authorized Recycler to dispose products that have reached end-of-life.
- Always drop your used electronic products, batteries or any accessories when they reach the end of their life at your nearest authorized Collection Center/Collection Point.
- Whenever possible or in instruction, separate the packaging material according to responsible waste disposal options and sorting for recycling.

### Don't's:

- Do not dismantle your electronic products on your own.
- Do not throw electronic products into fire.
- Do not give waste to informal and unpermitted sectors like Local Scrap Dealer/Rag Pickers.

Manufacturer and Seller: Xiaomi Technology Co., Ltd. (Xiaomi) and its subsidiaries. Xiaomi is a trademark of Xiaomi Technology Co., Ltd.

© 2015 Xiaomi Technology Co., Ltd. All rights reserved. Xiaomi, the Xiaomi logo, and the word "MI" are trademarks of Xiaomi Technology Co., Ltd. in China and other countries.

HDMI is a registered trademark of HDMI Licensing, LLC. All rights reserved.

For more accessories, please visit mi.com/na

MI Customer Service: www.mi.com/service